



Providing flexible solutions for
INDUSTRY

“Great customer service, fast prototypes, wide knowledge base, willingness to help in our development process... These are the things that come to mind when I think of Marian.”

– Senior Engineer, Product Development Consulting Firm

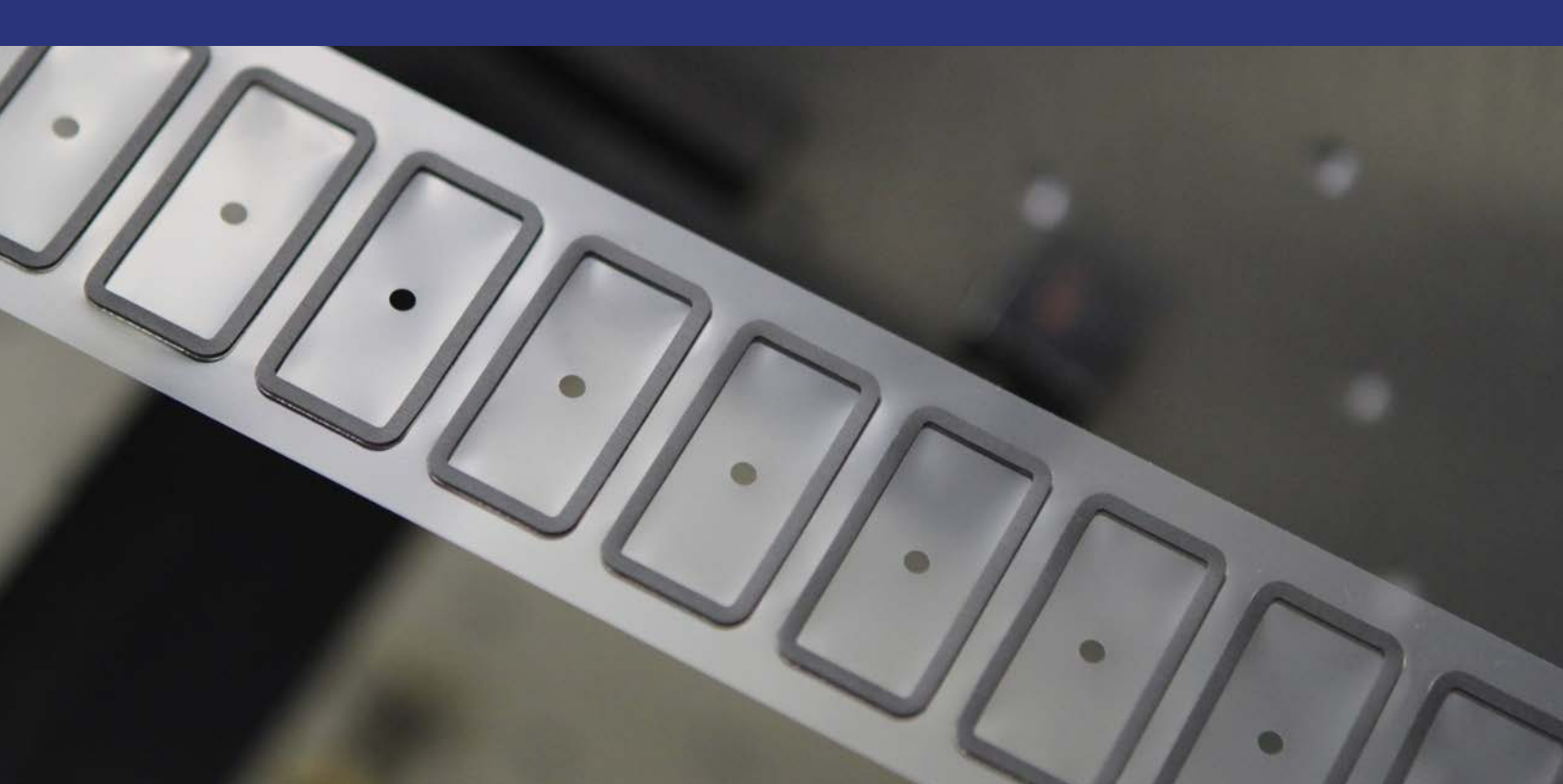
www.marianinc.com

sales@marianinc.com

 [marianincorporated](https://www.facebook.com/marianincorporated)

 [@Marianinc](https://twitter.com/Marianinc)

 [marian-inc.](https://www.linkedin.com/company/marian-inc)



Converting at Marian

Marian is an ISO 9001:2015 certified leader in developing innovative die-cut solutions. We specialize in using cutting-edge manufacturing processes to convert the toughest materials into precision components. Our value-added services and capabilities are extensive and include: material specification and selection, fast prototypes, multi-layered laminations, ability to meet tight tolerances, island placement capabilities, and automated assembly techniques. Leverage our wide-ranging experience and global resources to turn your design challenges into solutions.

Our Process

Consultation



Material Selection



Prototype



Manufacture



Final Packaging

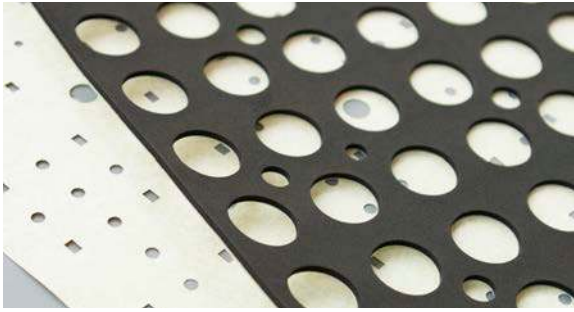
Your Sales Engineer will collaborate with you to fully understand the details of the design challenge you are facing, considering application, end use, quality requirements and cost constraints.

Our Sales Engineers have an average of 15 years of experience working with soft flexible materials. This wealth of knowledge plus the strong partnerships we share with the world's leading material manufacturers allow us to suggest and supply the most suitable materials for your solution.

We offer a number of prototyping capabilities, including computer generated prototypes, laser or water jet cutting, blade cutting plotters and multilayer laminations. No tooling is required. Just provide us with your CAD file and we will create a prototype in 24 hours (for stock materials only).

With the design details and selected materials, our engineers will devise the most efficient, cost effective and high quality process to manufacture your custom components to your specifications.

After your component parts are fabricated in accordance with precise industry standards, we will package them as your assembly process requires: individually, sheets, or rolls. In addition, we have the ability to add industry-specific processes, such as clean rooms for medical component part production.



Materials

With the most extensive material knowledge in the industry, Marian will find the right material for your application. Our engineers and sales associates are familiar with thousands of materials ranging from inexpensive sponges and foams to high-end foils and absorbers. Marian has a long-standing relationship with premier material manufacturers such as 3M, Rogers, Tesa, Parker Chomerics, Polymer Science, and Saint Gobain.

- Sponges and Foams
- Adhesives and Tapes
- Conductive Tapes
- Graphite
- Thermal Pads
- Copper, Aluminum Foils
- Films, Rubber, TPR
- Filter Fabrics and Mesh
- Urethanes
- Silicones



Manufacturing Capabilities

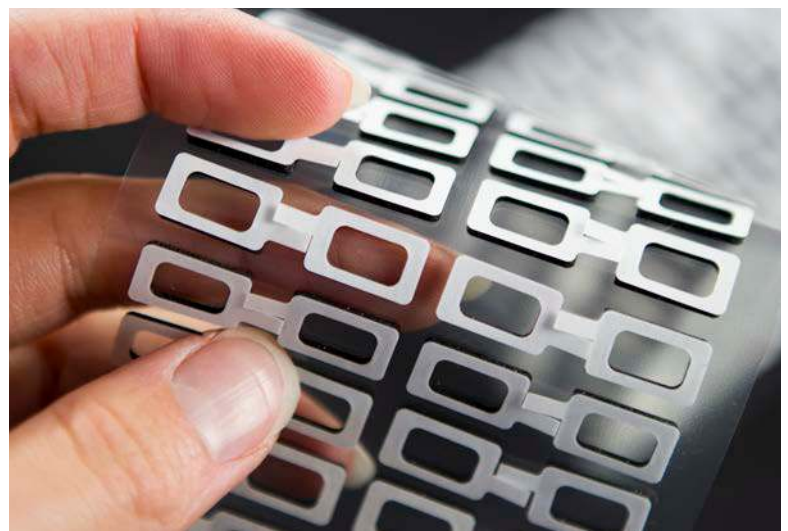
Marian continuously invests in and creates innovative manufacturing technologies to produce high quality component parts. The components manufactured by Marian have proven to enhance assembly processes and reduce costs. With a wide variety of manufacturing capabilities we can offer a solution to meet the needs of your application.

- Rapid Prototyping
- Rotary Die Cutting
- Flat Bed Die Cutting
- Match-Metal Die Cutting
- Plotter
- Precision Slitting
- Laser Cutting
- Water-jet Cutting
- Laminating
- Assembly
- Screen Printing
- Spooling

Solutions

Designing a new product can be challenging. Custom components manufactured by Marian provide solutions for a variety of applications seen in today's cutting edge product designs.

- Bonding & Joining
- Gasketing & Sealing
- EMI/RFI Shielding
- Thermal Management
- Cushioning & Vibration Damping
- Filtering & Venting
- Surface Protection
- Electrical Insulation
- Light Blocking





Marian is a global leader in providing precision die-cut component parts for customers in the consumer electronics, automotive, and medical industries. With over 500,000 square feet of production space worldwide and state-of-the-art manufacturing technologies, Marian engineers work closely with customers to solve complex manufacturing and assembly problems. Marian’s responsive approach, in-depth material knowledge, innovative manufacturing capabilities, and high standards for quality all add up to provide you with the best component solutions in the industry.



Indianapolis, IN
800.773.0062

Chicago, IL
630.293.7800

El Paso, TX
915.591.8558

Fort Worth, TX
817.332.6151

Milwaukee, WI
414.672.3000

Bay Area, CA
(Sales and Engineering Office)
408.973.7866

Marian Europe
49.4241.8026400

Singapore
65.6280.8034

Suzhou, China
86.512.6283.3438

Shenzhen, China
86.755.2967.0073